

# Cascade.

566 WOLF WILLOW BLVD SE

1652 SQ.FT.

3 BEDS | 2.5 BATHS

**\$600,000** Includes Lot & GST

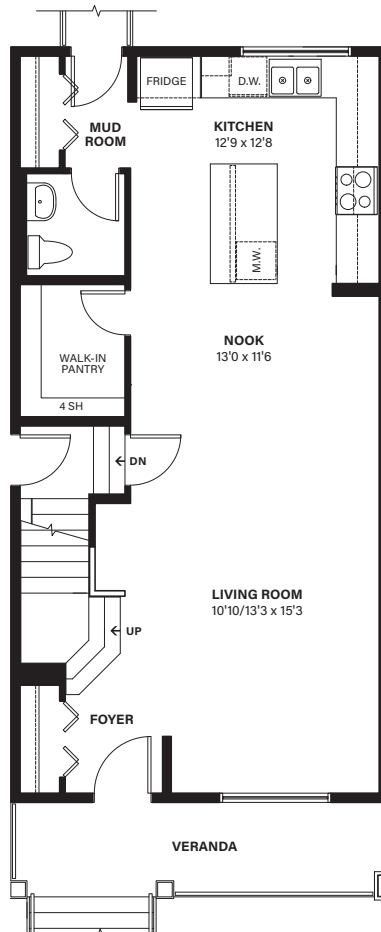
**IMMEDIATE POSSESSION**  
Open House Dec 13 & 14!



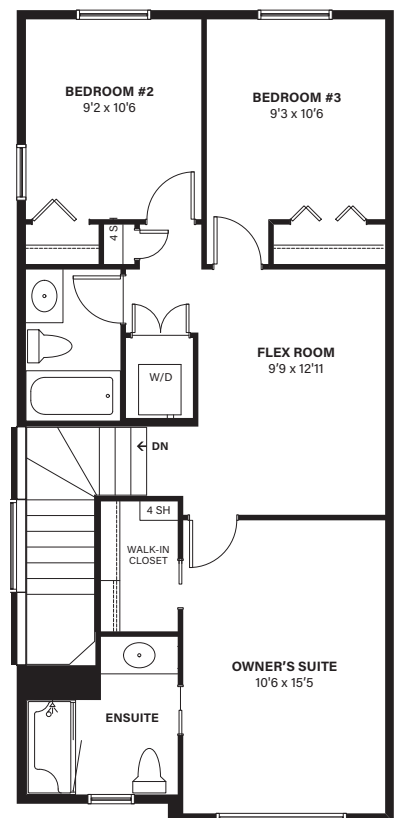
## FEATURES

- Open floor main layout
- Foyer with handy coat closet
- Spacious front family room with large window to allow in natural light
- Central dining nook is open to the family room and kitchen
- L-shaped kitchen with spacious walk-in pantry
- Central half bath
- Rear mudroom with coat closet
- Second floor laundry
- Two similar size secondary bedrooms
- Central flex room
- 3 piece main bath conveniently located close to secondary bedrooms
- Front owner's suite with large walk-in closet and private 3-piece ensuite
- LVP flooring on main floor
- LVP flooring on stairs and bonus room
- Upgraded kitchen cabinets
- Upgraded kitchen backsplash
- Upgraded half bath
- Upgraded wall tile, floor tile, mirror, and shower glass in ensuite

MAIN FLOOR 800 SQ.FT.



SECOND FLOOR 852 SQ.FT.



SHANEHOMES.COM

Showhome | 566 Wolf Willow Blvd SE

Hours | Monday - Thursday: 2PM - 8PM | Saturday, Sunday & Holidays: 12PM - 5PM

Melissa Norris - Area Manager | (403) 536-2314 | MelissaN@shanehomes.com

Alicia Wengrowich - New Home Advisor | (403) 536-2314 | AliciaW@shanehomes.com



**SHANE**  
HOMES