

# SHEFFIELD.

INVENTORY IN GIDEON GROVE  
1902 PEBBLE LANE, ROCKWALL, TEXAS

3291 sq.ft.

5 beds | 4.5 baths

**\$718,000\***

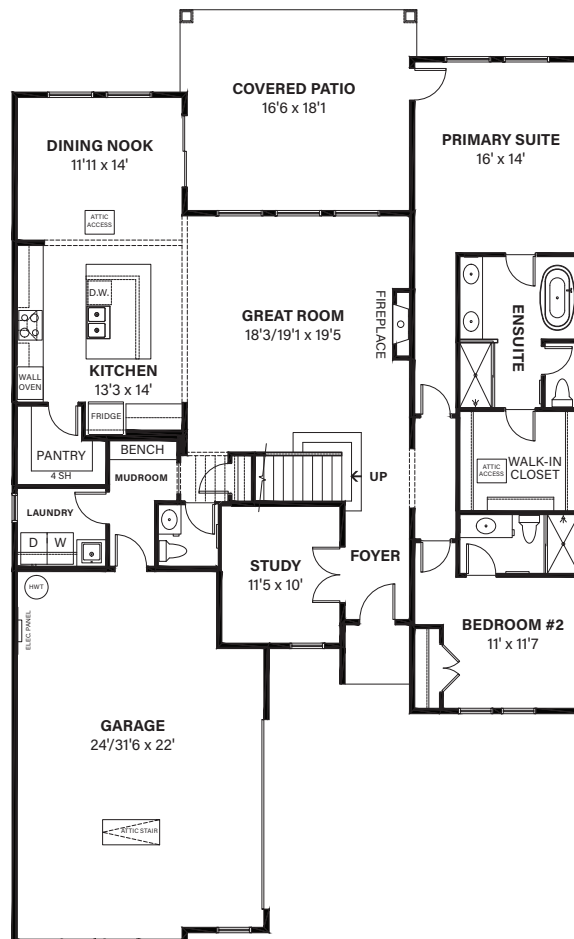
\*PRICE INCLUDES HOME & LOT. SUBJECT TO CHANGE.  
SEE COMMUNITY MANAGER FOR DETAILS.



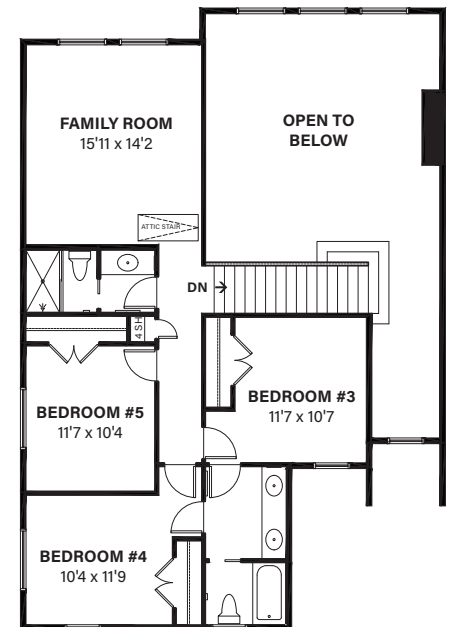
## FEATURES:

- Hardwood throughout main floor - including in the Primary Suite and Second Floor Family Room
- Hardwood stairs
- White oak railing
- Two tone cabinetry throughout home
- Quartz counter tops throughout home
- Wood hood fan in kitchen
- Full height stacked upper cabinets in kitchen
- Stainless steel appliance package including 36" gas stove, built in wall oven, dishwasher, and microwave
- Walk-in pantry
- Upgraded carpet in bedrooms
- Patterned floor tile in mudroom and laundry
- Upgraded tile in all bathrooms
- Under-mount sinks in all bathrooms
- Black plumbing fixtures
- Black bath hardware and door hardware
- Black lighting package
- Fireplace with tile and mantle
- Two main floor bedrooms with ensuites

## MAIN FLOOR: 2210 SQ.FT.



## SECOND FLOOR: 1081 SQ. FT.



**SHANE**  
HOMES

[www.shanehomes.com](http://www.shanehomes.com)

Michelle Morgan - Community Sales Manager | P: 469-617-9093 | E: MichelleM@shanehomes.com

© Copyright 2025. Shane Homes (Texas) Inc. This plan is published by Shane Homes, 13509 Lyndon B Johnson Frwy #1038 Garland, Texas 75041. Floorplans, dimensions and elevations shown are approximate, may not be available in all communities and are subject to change without notice. All rights reserved including the rights of reproduction in whole or in part, in any form, without the permission of Shane Homes. Actual may vary (refer to blueprint). Optional layout combinations may or may not be available as selected depending upon structural requirements. Other optional layout combinations may be available. Including features may be changed at any time without notice. All renderings are Artist's Renderings Only. See Community Sales Manager for complete details.